

### Outline

- Introduction to GPS
- Some Location-Based Systems
- Administrivia
- Assignment 1
- Teams

### What is GPS?

- Satellite-based navigation system made up of a network of 24 satellites
- GPS receivers read signals from the satellites
- Use triangulation to calculate the user's location

### Some Location-Based Systems

- ActiveCampus
- PacManhattan
- GPS Drawing
- Location-Aware ToDo Lists

### ActiveCampus

A photograph of a mobile PDA device displaying a list of items and a map. In the background, two people are looking at a large map on a wall.

### ActiveCampus

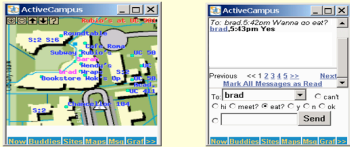
ActiveCampus - What's around

Two screenshots of the ActiveCampus software interface. The left one shows a map with various location markers. The right one shows a list of nearby locations with details like "Talk to...", "Grand Lecture...", "Theater...", and "Architecture & Comp...".

14

## ActiveCampus

### ActiveCampus - Who's around

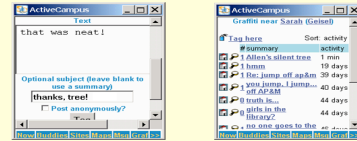


16

## ActiveCampus

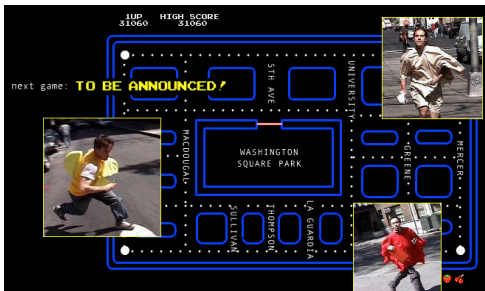
### ActiveCampus - Discourse

"digital graffiti"

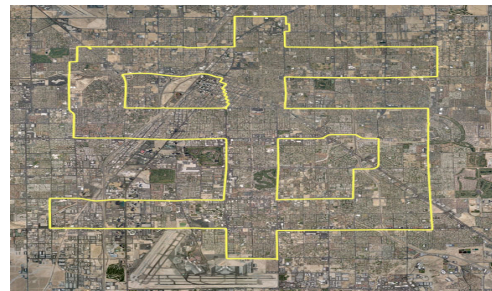


18

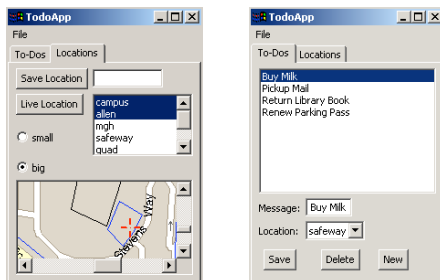
## PacManhattan



## GPS Drawing



## Location-aware ToDo Lists



## Administrivia

- The class web page is up: <http://www.ics.uci.edu/~jpd/classes/ics105s05/>
- Discussion sections as needed
- The ICS 104 prerequisite will be strictly enforced!
- Adding/Dropping
  - Contact either Professor Dourish or me ASAP if you are even thinking of dropping the class

## Assignment 1

- Due in class next Tuesday, April 12
- Start thinking about the project!
- Generate 4 application ideas
- Half a page (11 pt) on each idea
  - What the application will be
  - Who would use it
  - How they would use it
  - When they would use it

## Teams

- 4-5 people per team
- At least one person per team needs to have a laptop with WLAN
- Each team gets one GPS device
- You **ARE** responsible for the GPS devices